

TORRANCE ALUMINUM

ALUMINUM WINDOW and DOOR SYSTEMS



900 SERIES THERMAL-BREAK TERRACE DOORS

Single-Leaf and Double-Leaf Hinged Glass Doors

Equal Leg, Standard Nail-Fin or Recessed Nail-Fin Framing

Insulated or Non-Insulated Glazing — Rectangular or Sloped Glazing Beads

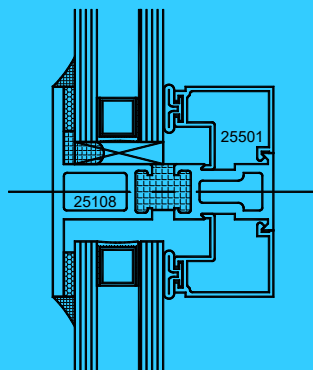
True or Simulated Muntins (See below)

Standard or ADA Thresholds Available

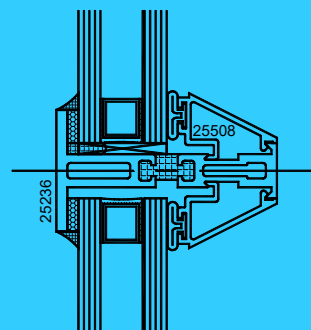
Outswing Single-Leaf Door tested up to 12 lbs. water with ADA threshold.

Single-Leaf Door tested to STC 43 with 1" Insulated Laminated Glass

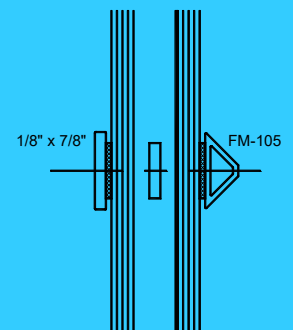
Muntin Options:



STANDARD 2 3/8" MUNTIN
(True Divided Light)



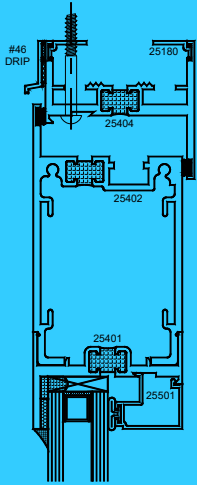
NARROW 1 3/8" MUNTIN
(True Divided Light)



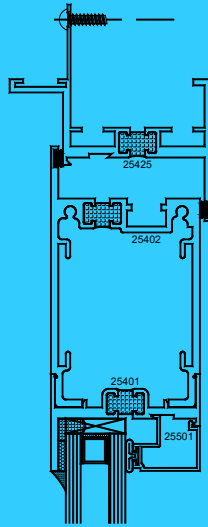
7/8" FALSE MUNTIN
(Simulated Divided Light)

900 SERIES THERMAL-BREAK TERRACE DOORS

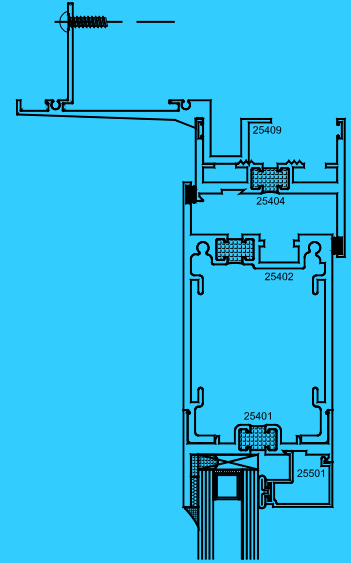
Standard Framing Options:



EQUAL LEG FRAME
OUTSWINGING DOOR

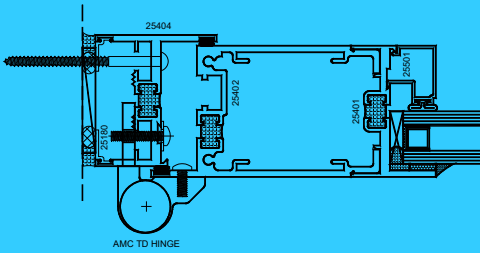


NAIL-FIN FRAME
OUTSWINGING DOOR

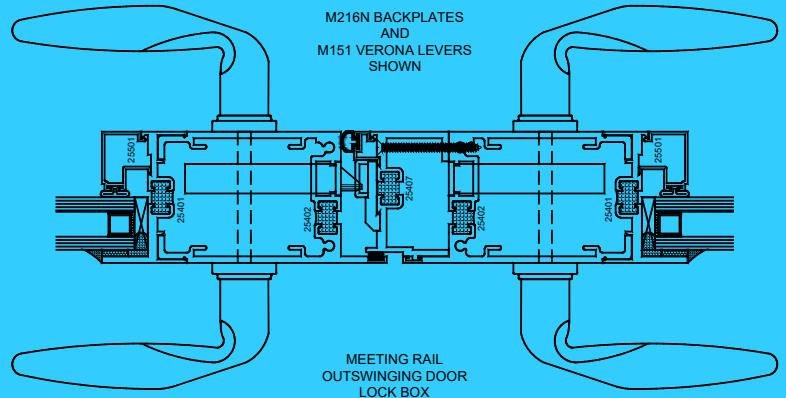


RECESSED NAIL-FIN FRAME
OUTSWINGING DOOR

Standard Hardware:



EQUAL LEG FRAME
OUTSWINGING DOOR
HINGE JAMB



NOTE: 1" Insulated glass units are shown. Other glass thicknesses are available.

Many other framing sections are also available. Consult TAW with your needs.

Standard, ADA and specialized door hardware are available. Consult TAW.

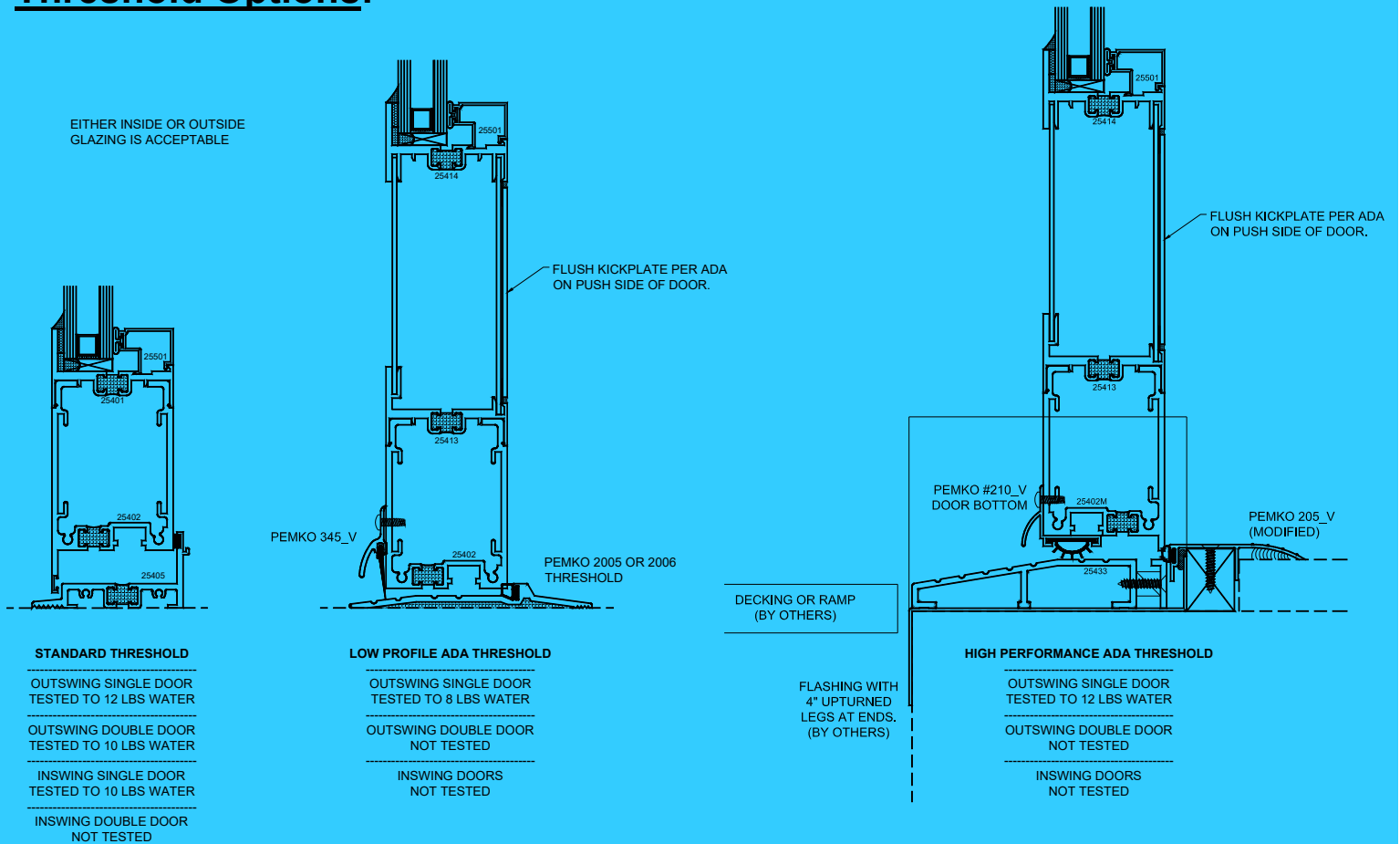
900 SERIES DOOR PERFORMANCE TABLE

<u>RATING</u>	<u>CONFIGURATION</u>	<u>AIR</u>	<u>WATER</u>	<u>STRUCTURAL</u>	<u>U-VALUE</u>	<u>STC Rating</u>	<u>BLAST</u>
AW65	OUTSWING SINGLE STD	6.24 psf	12.0 psf	97.5 psf	0.49	43	YES
AW40	OUTSWING SINGLE ADA	6.24 psf	8.0 psf	60 psf	0.49	43	NO TEST
AW-PG60	OUTSWING SINGLE ADA	6.24 psf	12.0 psf	90 psf	0.49	43	NO TEST
NO TEST	OUTSWING DOUBLE ADA	NO TEST	NO TEST	NO TEST	0.49	NO TEST	NO TEST
AW65	INSWING SINGLE STD	6.24 psf	10.0 psf	97.5 psf	0.49	43	NO TEST
AW40	OUTSWING DOUBLE STD	6.24 psf	10.0 psf	60 psf	0.49	NO TEST	NO TEST

Note: U-Values, STC Rating and Blast Testing are Glass Dependent!

900 SERIES THERMAL-BREAK TERRACE DOORS

Threshold Options:



900 Series Specifications:

General: Doors are thermally-broken Series 900 as manufactured by Torrance Aluminum. They include hardware and related items as described and shown on the approved Shop Drawings.

Material: Aluminum used is heavy commercial quality extruded aluminum 6063-T5 & T6 alloys with an internal polyurethane structural thermal barrier. Doors are designed for inside or outside glazing using snap-in aluminum extruded bead.

Construction: All corners are closely fitted, butt-jointed and tightly joined by mechanical means. All joints are sealed weathertight. Door sections will be double weather-stripped, with EPDM sponge neoprene seals keyed into extruded grooves.

Glazing: At frames and ventilators, glazing legs are 7/8" high. Glazing beads are extruded, snap-in type, not less than .050" thick and able to accommodate up to and including 1 1/2" glass, panels or louvers.

Finish: Class I Anodizing or Kynar 500 paint, Electrostatically applied with a minimum of 70% Fluoropolymer Resin, Class I. Matching of special colors in Kynar 500 is available.

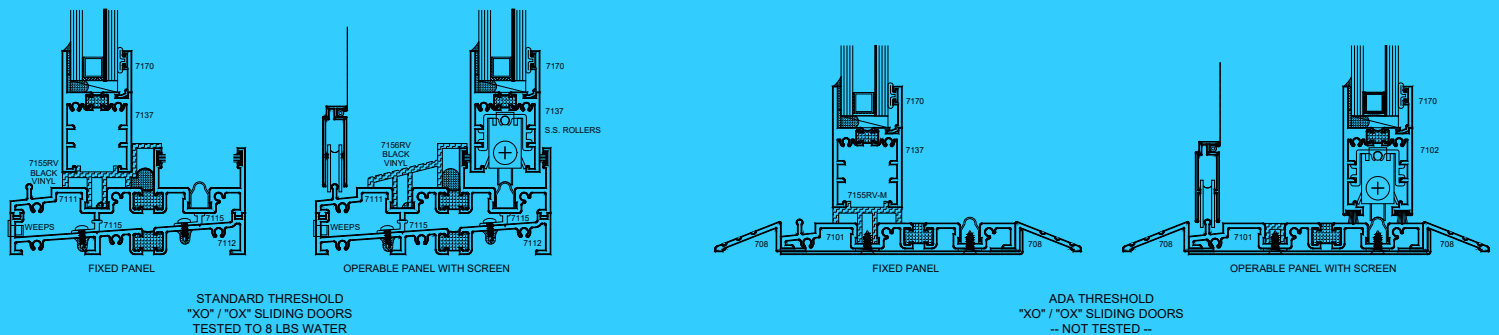
Hardware: Torrance Aluminum's adjustable TD hinges, concealed 90 degree door stops, various thresholds and Hoppe locksets. Customers and Architects may choose from several trim designs and finishes. Other hardware is available.

Thermal Barrier: The thermal barrier consists of a two-part, chemically curing, high strength polyurethane resin. This barrier provides a continuous, uninterrupted thermal-break around the entire perimeter of frames and door leaves; and is not bridged by any metals, conductors or other materials.

Installation: Door frames must be installed plumb, level and true without springing or twisting, and be securely fastened in place in accordance with the approved Shop Drawings and applicable building codes. Frames are to be caulked with a suitable compound; using appropriate joint design to accomplish a thoroughly water-tight installation as per the approved Shop Drawing details. Please note that Architectural waterproofing instructions would take precedence.

7100 SERIES SLIDING GLASS PATIO DOORS

Equal Leg or Nail-Fin Thermal-Break Framing — Simulated Muntins
 Insulated or Non-Insulated Bead Glazing — Standard or ADA Thresholds
 Sliding Insect Screens with Fiberglass Mesh (Aluminum Mesh Available)



7100 Series Specifications:

General: Doors are thermally-broken Series 7100 as manufactured by Torrance Aluminum. They include hardware and related items as described and shown on the approved Shop Drawings.

Material: Aluminum used is heavy commercial quality extruded aluminum 6063-T5 & T6 alloys with an internal polyurethane structural thermal barrier. Doors are designed for inside or outside glazing using snap-in aluminum extruded bead.

Construction: All corners are closely fitted, butt-jointed and tightly joined by mechanical means. All joints are sealed weathertight. Door sections will be double weathered with pile weather-stripping keyed into extruded grooves.

Glazing: At frames and ventilators, glazing legs are 7/8" high. Glazing beads are extruded, snap-in type, no less than .050" thick and accommodate up to and including 1" glass, panels or louvers.

Finish: Class I Anodizing or Kynar 500 paint, Electrostatically applied with a minimum of 70% Fluoropolymer Resin, Class I. Matching special colors in Kynar 500 is available.

Hardware: Torrance Aluminum's heavy duty Rollers, various thresholds and standard patio locksets. Other hardware is available.

Thermal Barrier: The thermal barrier consists of a two-part, chemically curing, high strength polyurethane resin. This barrier provides a continuous thermal-break around the entire perimeter of frames and panels.

Installation: Door frames must be installed plumb, level and true without springing or twisting, and be securely fastened in place in accordance with the approved Shop Drawings and applicable building codes. Frames are to be caulked with a suitable compound; using appropriate joint design to accomplish a thoroughly water-tight installation as per the approved Shop Drawing details. Please note that Architectural waterproofing instructions would take precedence.

7100 SERIES DOOR PERFORMANCE TABLE					
<u>RATING</u>	<u>AIR</u>	<u>WATER</u>	<u>STRUCTURAL</u>	<u>U-VALUE</u>	<u>STC Rating</u>
SC-HC40	6.24 psf	8.0 psf	60 psf	0.53	38

Note: U-Value and STC Rating are Glass Dependent!

TORRANCE ALUMINUM

3087 12TH STREET
 RIVERSIDE, CA 92507

Phone (951) 783-9302
 FAX (951) 783-9031

www.TorranceAluminum.com

email: info@TorranceAluminum.com

A division of Stylex Windows and Doors